



GAT MONTHLY MEMBERSHIP PROGRESS REPORT

Results as of: 5/31/2023

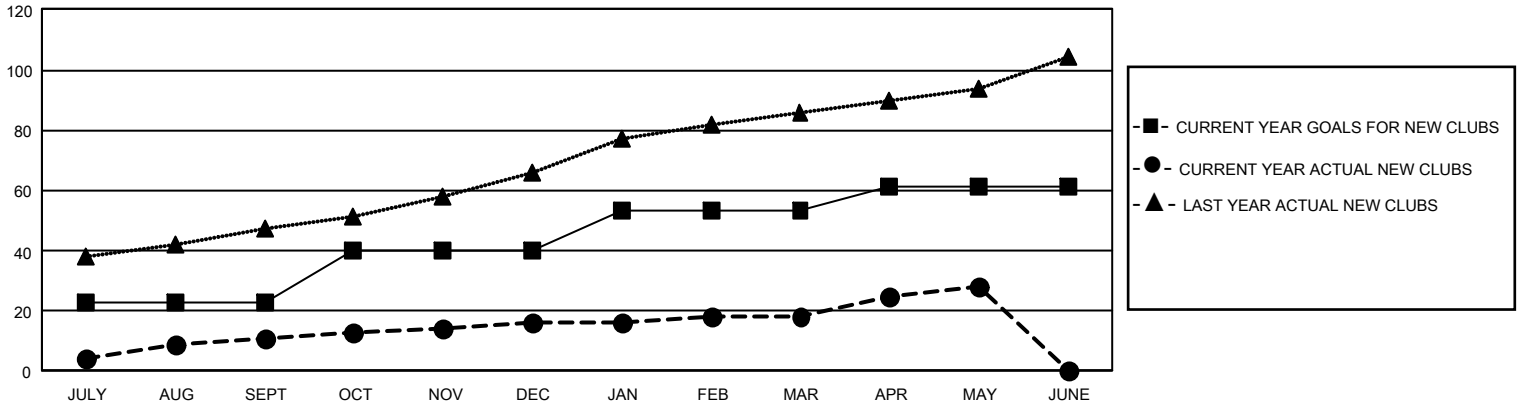
GMT Constitutional Area 6, Group J

REPORT DOES NOT INCLUDE CLUBS IN UNDISTRICTED AREAS.

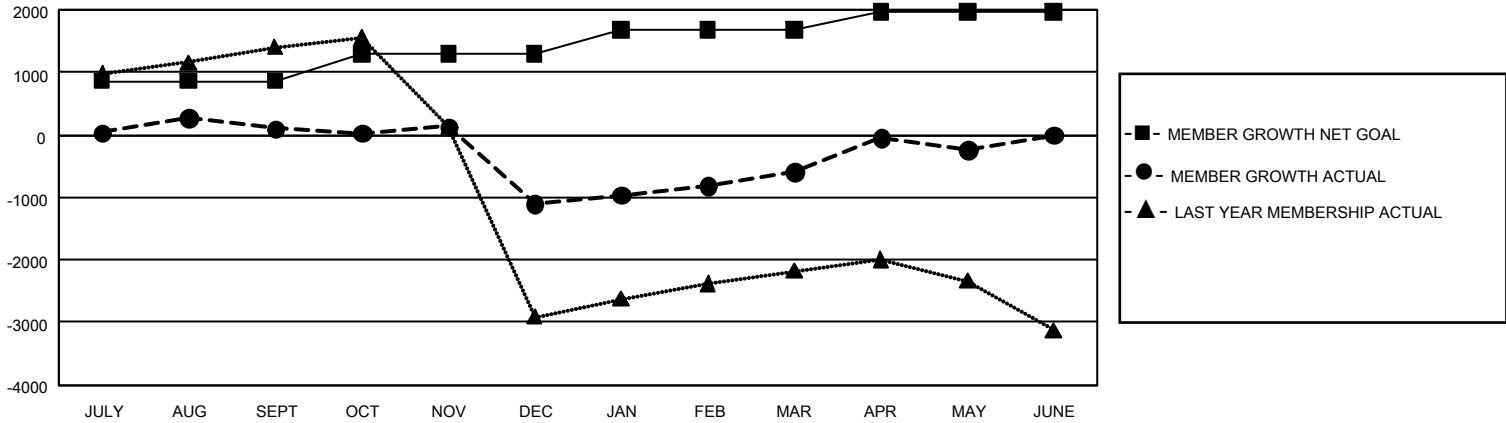
Clubs			
RESULTS FOR 2022-2023			
QUARTER	NEW CLUB GOAL	NEW CLUBS	DROPPED CLUBS
JULY/AUG/SEPT	69	11	103
OCT/NOV/DEC	51	5	21
JAN/FEB/MAR	39	2	37
APR/MAY/JUNE	24	10	4

Members			
RESULTS FOR 2022-2023			
QUARTER	MEMBER GROWTH NET GOAL	MEMBER GROWTH ACTUAL	DROPPED MEMBERS ACTUAL (including transfers)
JULY/AUG/SEPT	860	1,077	872
OCT/NOV/DEC	435	995	2,106
JAN/FEB/MAR	385	1,009	301
APR/MAY/JUNE	285	1,018	529

GOALS AND ACTUAL NEW CLUBS CUMULATIVE



GOALS AND ACTUAL MEMBERS CUMULATIVE



DROPPED CLUBS: 165	485 CLUBS OF 953 ADDED 1 OR MORE NEW MEMBERS	<u>GENDER DISTRIBUTION</u>	
<u>DROPPED MEMBERS</u>		MALE	17,882 (62.08%)
DECEASED	80	FEMALE	10,917 (37.90%)
CLUB CANCELLED	522	NON BINARY	0 (0.00%)
OTHER	3,206	PREFER NOT TO ANSWER	5 (0.02%)
TOTAL	3,808	TOTAL FAMILY UNIT MEMBERS	19,097
	CLICK HERE FOR CUMULATIVE MEMBERSHIP DATA	FAMILY MEMBERS PAYING HALF DUES	12,231